

e-STUDIO™ 2500c/3500c/3510c

Created for
BUSINESS,
focused on
COLOR



TOSHIBA
Don't copy. Lead.





Where Text and Color

CONVERGE

Which would you prefer: Professional color or unrivaled text and images? Why not both?

The e-STUDIO2500c/3500c/3510c multifunction print/copy/scan/fax (MFP) devices utilize a state-of-the-art, printer-centric engine developed exclusively by Toshiba's imaging experts. The result is a full-color workhorse that's perfect for users who demand unparalleled business productivity, full-color scanning, and razor-sharp printing.

You Win Some, You Win Some More

It's true that all color copiers provide black and white capabilities. But not all color copiers offer the kind of crisp, detailed black and white that you need for a sophisticated, professional finish. Fortunately, with the optional EFI controller, the e-STUDIO2500c/3500c/3510c offers powerful color management controls, variable data printing, and graphic arts options that are a must for demanding business or graphics environments.

Sharper Images, Unrivaled Quality

The overall color superiority is supported by several new Toshiba technologies that provide superior color registration. Also, the e-STUDIO2500c/3500c/3510c are designed to support proprietary Toshiba toner that offers smoother reproduction of photos and halftones, and excellent color fidelity and quality. Additionally, both devices boast a breakthrough feature that enables the devices to create sharp, accurate text along with vibrant, professional-quality color reproduction.





e-BRIDGE

All-in-one Single Board Architecture

Unparalleled image quality and performance is a direct benefit of Toshiba's proprietary, on-board 8-bit controller. The controller features a PowerPC 867 MHz processor, 1 GB max memory, and 80 GB serial ATA hard disk.

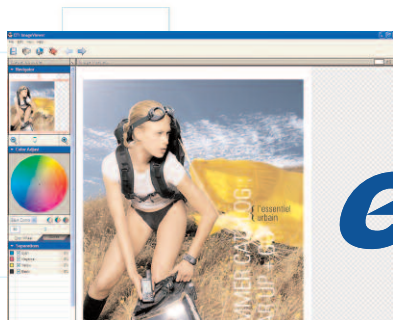
High-Precision Micro-Discrimination

The e-STUDIO2500c/3500c/3510c automatically distinguishes between text, graphics, and line art on the same page. The result is rich image and color reproduction with true blacks and deep colors.



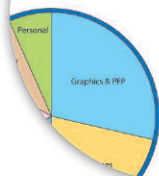
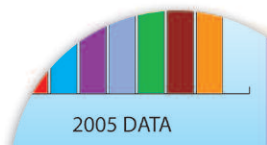
Innovative Toshiba Toner

See the difference with our new low-temperature fuser color toner that offers smoother reproduction of photos and halftones with excellent color fidelity.

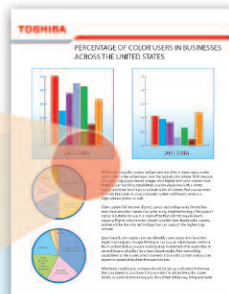



Watch your productivity skyrocket with the optional EFI Fiery System 8e Controller

For outstanding performance, seamless network integration, and unrivaled color quality in a variety of print environments, count on the Fiery System 8e Embedded Controller as a powerful document workflow solution for any task.



While business color copier offers a few advantages, it can easily copy paper, better paper handling, stapler and even network the copier, high-volume



When it's time to get down to business Looking for business-building innovation? First on the list of new developments is an all-in-one, net-ready architecture, providing the most cost-effective color copying, printing, and scanning capabilities available today. Ready to go, right out of the box, the multifunction devices deliver standard network or optional wireless connectivity so that you can put them anywhere in your workgroup. They're also amazingly easy to use.



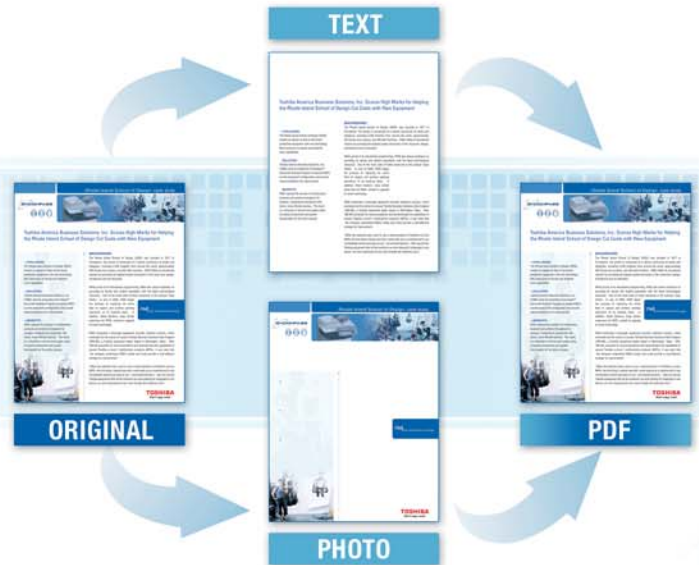
It's All About Control
The full-color VGA control panel is not only a thing of beauty, it balances intuitive control with an inviting interface. In the end, you'll get more done, more quickly.



Stay Productive

The e-STUDIO2500c/3500c/3510c feature an ergonomically designed control panel that makes the most complex task a snap. Timesaving templates make routine jobs as easy as walking up and pushing a button. Big print jobs are further simplified by a tilting VGA color control panel featuring large, easy-to-read text as well as an interactive copier diagram that displays all functions from paper configuration to copier status.

Competitive pricing, Energy Star compliance, first-copy-out time of 8.6 seconds for color, and complete warm-up in 99 seconds— together these make the e-STUDIO2500c/3500c/3510c worthy choices for every environment. Factor in their world-class color capabilities, and you could argue that they're the only choice.



Large PDFs? No Problem!
Toshiba's Slim PDF feature shrinks file sizes for faster network throughput while maintaining graphics image quality.

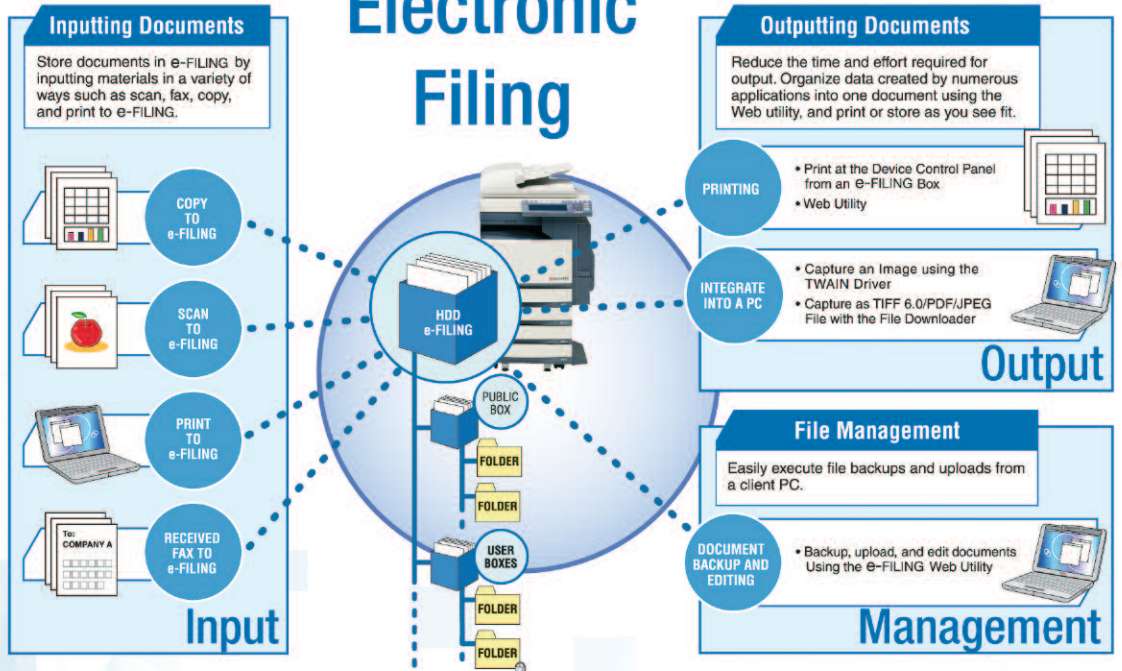




Simplified Document Storage And Retrieval

Toshiba's proprietary e-FILING feature makes it easy to store frequently used documents for simplified retrieval and printing as well as data distribution to multiple destinations.

Electronic Filing



Flexible Paper Capacity

Sure, the e-STUDIO2500c/3500c/3510c can handle color, but what about paper? Both devices come standard with two 550-sheet universal cassettes and a 100-sheet bypass tray. You also have the option of adding two additional 550-sheet cassettes, or a 2,500-sheet tandem large-capacity feeder for a maximum paper capacity of 3,700 sheets from up to five different paper sources.

One For All, All For One

For more flexibility, e-STUDIO2500c/3500c/3510c are network, print, and scan ready, right out of the box. Both come complete with Toshiba's second generation e-BRIDGE platform allowing the devices to print and scan, print and fax, even copy and scan – all at the same time. This unified design shares system resources to control multiple functions simultaneously.

eCopy™ ScanStation OP V3.0

Leverage flexible, rapid solutions for paper-to-digital business integration. eCopy ScanStation OP document imaging and distribution software transforms your e-STUDIO2500c/3500c/3510c into full-featured information hubs. It integrates hardcopy documents directly into the workflow of critical business processes—reporting, administration, document management, financials, human resources, and customer management. Additionally, easy-to-use administration tools let you manage multiple devices from one central location.

Ae-Rite™

Convert scanned documents into 16 file formats with the touch of a button. Instant Optical Character Recognition (OCR) file format transforms hardcopy text and graphic documents into easily editable file formats including .doc, .html, .pdf, and more. This innovative technology automatically performs OCR and file conversions. Converted images can then be sent to network drives, Email, or both.

Good For You, Good For The Earth

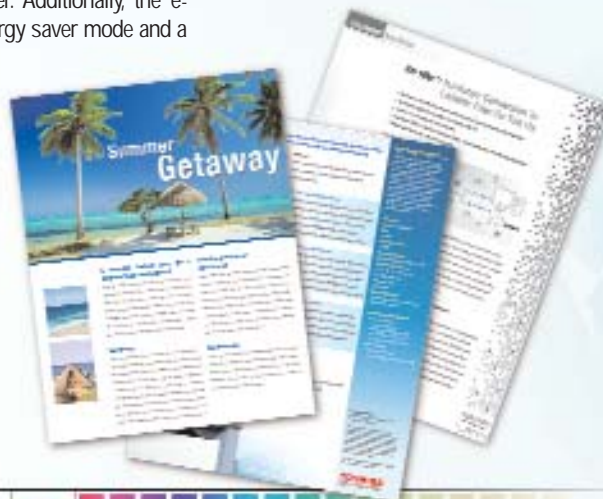
Toshiba is committed to making the world a better place by scaling down the use of chemicals that are harmful to the environment. Which is why approximately 50% of the base materials of our printed circuit boards contain no halogen, and more than 70% of the printed circuit board is constructed using lead-free solder. Additionally, the e-STUDIO2500c/3500c/3510c are Energy Star compliant and offer energy saver mode and a sleepmode to reduce power consumption when not in use.

See For Yourself – In Living Color

If you're interested in finding out more about how the e-STUDIO2500c/3500c/3510c are the single source for professional color and crisp black and white, visit us online at www.copiers.toshiba.com, or call your local Authorized Toshiba Dealer.

Professional document finishing includes stapling, hole punch, and saddle-stitch

Standard hard-disk AES encryption for added data security



Heightened Security

Along with productivity and performance, today's businesses are becoming more and more concerned about security. The e-STUDIO2500c/3500c/3510c offer 128-bit data encryption as a standard feature – ensuring vital data remains protected by employing the next-generation Advanced Encryption Standard (AES).

Easily Replaceable Units (ERU) design saves money on service costs and maximizes uptime

Set permissions for color printing and copying either by department or individually to track and manage costs

Tilting, color half VGA control panel is 508 compliant and increases visibility, making the devices easier to use and access

A Stackless Automatic Duplexing Unit (ADU) comes standard, helping reduce paper costs by easily handling two-sided originals

Single-pass, intermediate transfer belt

The devices can handle up to 3,700 sheets of paper from up to five sources

A compact design with inner space exit tray saves valuable space

Copy Features

- > Single-pass, four-drum, tandem color engine
- > Print speeds up to 45 PPM for B&W, and 35 PPM for color
- > 600 x 600 dpi resolution
- > FCOT: 6.5 Seconds for black (5.2 for e-STUDIO3510c), 8.6 Seconds for color
- > 99 seconds warm-up time
- > Preventive Maintenance 50K/70K
- > Color image quality optimized for general office and professional graphics
- > 508 compliant, tilting color control panel
- > Environmentally friendly, Energy Star compliant
- > ERU: Easily Replaceable Units

Printer Features

- > Power PC 867 MHz processor
- > PCL5c, PS3 (clone), PCL6
- > 10/100BaseT Ethernet interface
- > IEEE 802.11b/g wireless printing
- > Point & Print
- > Private, proof, scheduled, and stored print
- > New Unified Toshiba Print Driver

Fax Features

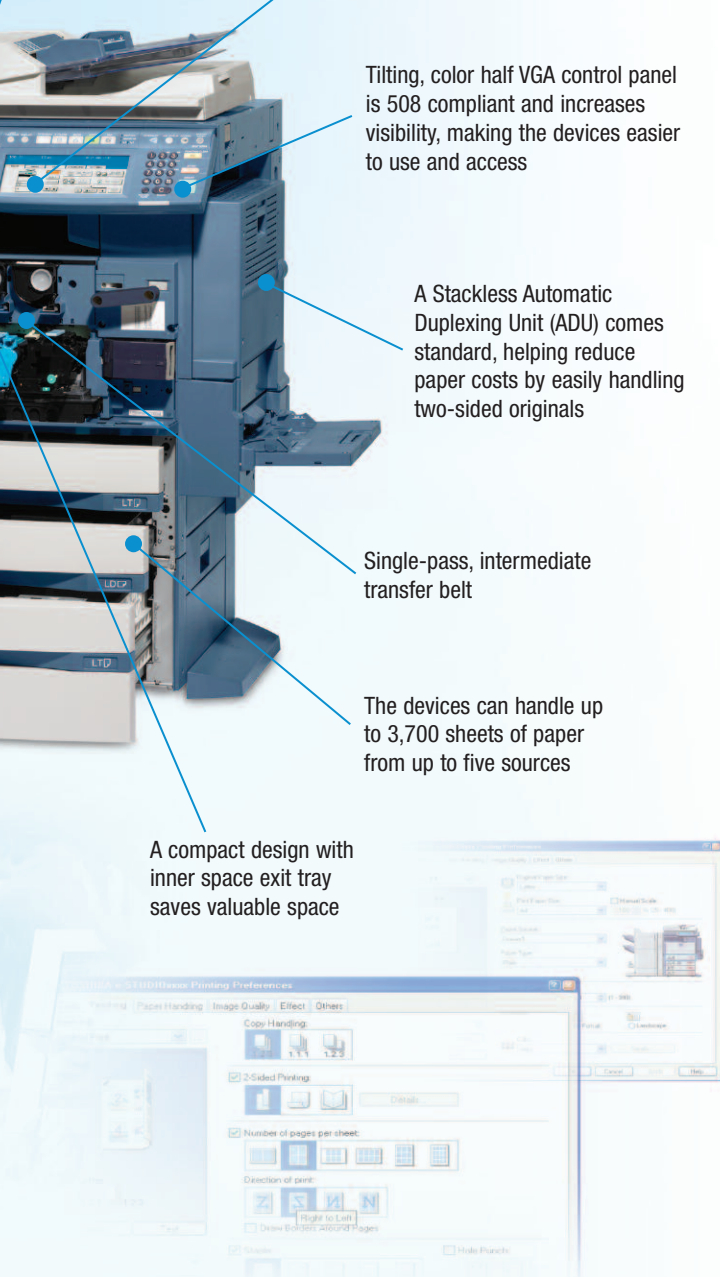
- > Super Group 33.6 Kbps
- > JBIG compression
- > Optional second line
- > Internet Faxing (T.37)
- > Incoming fax routing: Send-to-File/-Email/-Internet

Scan Features

- > Scan speeds up to 50 black SPM and 40 SPM color
- > 600 dpi B&W and color resolution
- > JPEG, TIFF and PDF file formats
- > Scan-to-File/Email/FTP
- > Control panel LDAP support
- > Unified Address Book

EFI Fiery® Controller GA1210 Features

- > Processor Intel® Celeron® 2 GHz
- > Memory (RAM) 256 MB (Standard), 1 GB (Maximum)
- > Hard Disk 80+ GB or larger
- > Printing resolution (B&W and Color) 600 x 600 dpi
- > Gradation 256 steps
- > Windows NT 4.0, 2000, XP
- > Network Interface 10BaseT, 1000BaseTX, (RJ45)
- > Network Protocol TCP/IP, IPX/SPX, AppleTalk®
- > PDL Adobe® PostScript® 3™, PCL6c®
- > EFI Fiery Driver
- > Command WorkStation
- > EFI Fiery WebTools™
- > Fiery ColorWise®
- > Fiery FreeForm™
- > EFI Graphic Arts Package



e-STUDIO™ 2500c/3500c/3510c SPECIFICATIONS

The Toshiba e-STUDIO2500c, e-STUDIO3500c and e-STUDIO3510c are powerful, multifunction color copiers that combine the performance of a multifunction system with the quality of a professional graphics solution. Outstanding speed, performance, and professional-quality color as well as detailed text and graphics can be yours – everyday, all the time. Thanks to Toshiba proprietary print technology, the e-STUDIO2500c/3500c/3510c devices are the ideal, cost-effective graphic/business solution for even the busiest office and pay-for-print environments.

Multifunction
COLOR



Fast!

Color and B&W

Full color output is produced at 25/35/35 PPM, with 35/35/45 PPM for black and white.

Network

READY

For the ultimate in flexibility — Print and scan, print and fax, even copy and scan — all at the same time.

Secure

BY DESIGN

Network Administration, 1,000 department codes and 10,000 user codes along with other security features.

SPECIFICATIONS

Copying Process	4-Drum Electrostatic Photographic Transfer System with Internal Transfer Belt
Copying Type	4-Beam Color Laser (8 bit)
Copy/Print Resolution	600 x 600 dpi (2400 x 600 dpi B&W equivalent)
Copy/Print Speed	e-STUDIO2500c – 25 PPM Color / 35 PPM B&W e-STUDIO3500c – 35 PPM Color / 35 PPM B&W e-STUDIO3510c – 35 PPM Color / 45 PPM B&W
Warm-Up Time	Approx. 99 Seconds
First Copy Out Time	e-STUDIO2500c – 8.6 Seconds Color / 6.5 Seconds B&W e-STUDIO3500c – 8.6 Seconds Color / 6.5 Seconds B&W e-STUDIO3510c – 8.6 Seconds Color / 5.2 Seconds B&W
Duty Cycle	50,000/70,000/70,000 Copies
Multiple Copying	Up to 999 Copies
Acceptable Paper Size and Weight	Cassette: ST-R to LD (17 lbs. Bond - 90 lbs. Index) Bypass: ST-R to 12" x 18" (17 lbs. Bond - 140 lbs. Index) LCF: LT (17 lbs. - 28 lbs. Bond)
Processor	Power PC 867 MHz Shared
Memory (Min/Max)	Main Memory: 512 MB / 1 GB Page Memory: 256 MB / 512 MB HD: 80+ GB
Reduction/Enlargement	25% to 400%
Bypass	100-Sheet "Smart" Bypass (17 lbs. Bond - 140 lbs. Index)
Control Panel	Color Half VGA Tilttable LCD Touch Panel
Paper Supply	Up to 3,700-Sheet Input Capacity Standard: 2 x 550-Sheet Cassettes 100-Sheet Bypass Optional: 1 x 550-Sheet PFP, 1 x 550-Sheet Cassette 1 x 2,500-Sheet LCF
Duplex	Standard Trayless Automatic Duplex Unit
Dimensions	Approx. 26" x 28" x 29" (W x D x H)
Weight	Approx. 265 lbs.
Minimum Footprint Requirement	39.53" x 28.31" (W x D)
PM Cycle	50,000/70,000/70,000
Drum Type/Yield	Organic Photoconductor: 50,000/70,000/70,000
CMYK Toner Yield	CMY: 21,000 / K: 24,000
Black Developer Yield	50,000/70,000/70,000
Power Supply	115 V, 15 Amps
Power Consumption	Maximum 1.5 kW

PRINT SPECIFICATIONS

PDL Support	PCL6 & PostScript 3
Operating Systems	Netware 4.x, 5.x, 6.x, Windows Me/2000/XP, Windows NT 4.0, Windows Server 2003, Citrix MetaFrame, Macintosh, Linux, UNIX
Protocol Support	IPX/SPX, TCP/IP, EtherTalk, AppleTalk, NetBIOS Over TCP/IP LPR/LPD, IPP, SMB, SNMP, Netware, Port 9100, Bluetooth (HCRP)
Drivers	Windows Me, 2000, Server 2003, XP, NT 4.0, Macintosh OS 8.6, 9.x, 10.1/10.2/10.3, UNIX, AS400 via iData & Port 9100, SAP R/3
Connectivity	10BaseT/100BaseTX Ethernet, 802.11b/g Wireless LAN, USB, Bluetooth (HCRP)
Device Management	TopAccess, Web Jetadmin
Certification	WHQL, Novell

Corporate Office: 2 Musick, Irvine, CA 92618-1631

East Coast: 959 Route 46 East, 5th Floor, Parsippany, NJ 07054 / Tel: 973/316-2700 Fax: 973/263-2393

Midwest: 8770 W. Bryn Mawr Ave., Suite 700, Chicago IL 60631 / Tel: 773/380-6000 Fax: 773/380-8077

South: 4855 Peachtree Industrial Blvd., Suite 210, Norcross, GA 30092 / Tel: 770/209-8540 Fax: 770/209-8556

West Coast: 142 Technology, Suite 150, Irvine, CA 92618 / Tel: 949/462-6262 Fax: 949/462-2700

Web Site: www.copiers.toshiba.com or www.fax.toshiba.com

SCAN SPECIFICATIONS

Scan Resolution	150 dpi, 200 dpi, 300 dpi, 400 dpi, 600 dpi
Scan Speed	40 SPM Color / 50 SPM B&W
File Format	TIFF, PDF, JPEG
Authentication	LDAP, SMTP

FACSIMILE SPECIFICATIONS

Compatibility	Super G3
Data Compression	MH/MR/MMR/JBIG
Transmission Speed	Approx. 3 Seconds Per Page
Fax Modem Speed	33.6 Kbps
Fax Memory	240 MB Transmission, 120 MB Reception
Memory Transmission	100 Jobs, 1,000 Destinations Max. 400 Destinations / Job
Scan Speed	.7 Seconds Per Page, 50 SPM

e-FILING SPECIFICATIONS

Operation Method	Color Touch Screen Control Panel or Client PC
Number of Boxes	1 Public Box, 200 Private User Boxes
Capacity of Boxes	100 Folders Per Box, 400 Documents Per Folder 200 Pages Per Document

OPTIONS

MR3018 RADF	100 Sheets
KD1018 Paper Feed Pedestal	550-Sheet Pedestal, Statement-R to Ledger
MY1031 Cassette Module	550-Sheet Drawer, Statement-R to Ledger
KD1019 Large Capacity Feeder (LCF)	2,500-Sheet Drawer, Letter
MJ1101 Multi-Position Finisher	Stationary Tray: 250 Sheets (Lt) Tray 1 Stack Capacity: 2,000 Sheets (Lt) Staple Capacity: 50 Sheets (Lt/Lt-R)
MJ1030 Saddle-Stitch Finisher	Tray 1 Stack Capacity: 1,000 Sheets (Lt) Tray 2 Stack Capacity: 1,000 Sheets (Lt) Staple Capacity: 50 Sheets (Lt/Lt-R)
MJ6101 Hole Punch Unit	(for MJ1101) 2- or 3-Hole Punch Capability
MJ6004 Hole Punch Unit	(for MJ1030) 2- or 3-Hole Punch Capability
KN3500 Bridge Kit	Required with MJ1101, MJ1030
GA1210 EFI Controller	(Not available at launch)
GD1210 Fax Board	
GD1160 2nd Line Fax	
GN1041 Wireless LAN Adapter	
GN2010 Bluetooth Adapter	
GN3010 Wireless Antenna	
GP1060 Data Overwrite Kit	
GC1250 Main Expansion Memory	
GC1260 Page Expansion Memory	



Designs and specifications subject to change without notice. For best results and reliable performance, always use supplies manufactured or designated by Toshiba. Not all options and accessories may be available at the time of product launch. Please contact a local Authorized Toshiba Dealership for availability. Toner yields are estimates, based on 6% coverage, letter-size page. Driver and connectivity feature support varies by client/network operating system.

AUTHORIZED TOSHIBA DEALER

TOSHIBA
COPY • PRINT • FAX • SCAN