

e-BRIDGE Job Build

Combine Multiple Documents and Print Settings into a Single Job



- > Print different document types (Word, PDF, Excel, etc.) together as a set
- > Switch between simplex and duplex printing within a single job
- > Select from different paper sources for each section of a print job
- > Combine letter, legal, tabloid and statement sizes within a single job
- > Mix color and black-and-white output
- > Use various paper weight and color
- > Save time sorting and collating

Print Multiple Documents as a Single Set

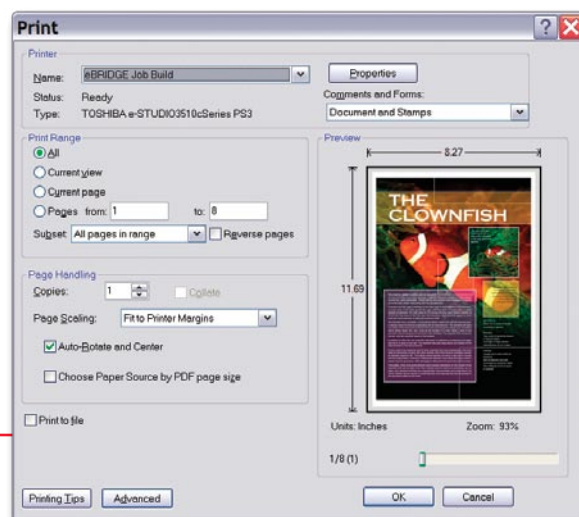
Toshiba's e-BRIDGE™ Job Build expands the capabilities of your Toshiba e-STUDIO Multifunction Peripheral (MFP) by allowing it to combine multiple documents—of various file types, paper types, and document settings—into a single print job. Print multiple copies of each set quickly and easily. Reduce costs by switching between color and black-and-white printing within the same job as needed. Eliminate time-consuming sorting and hand collating.

How It Works

Simply select “e-BRIDGE Job Build” from the printer list in the print options dialog from your application. Choose the page range, paper size and source, color or B&W output type, or simplex/duplex options as required. You can print as many documents as you like—each with its own unique print specifications—to e-BRIDGE Job Build.

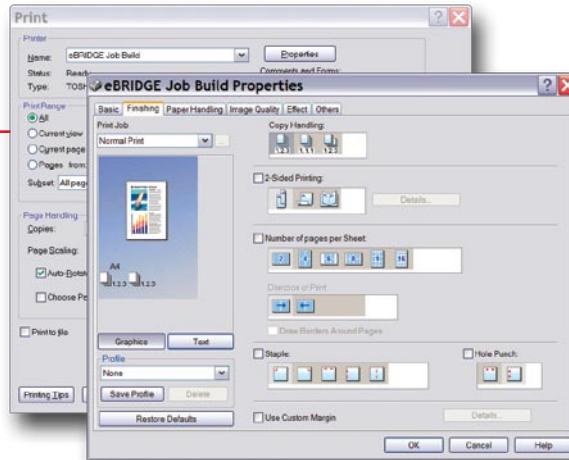
Easy-to-use, familiar interface

Printing to e-BRIDGE Job Build is as easy as printing to your Toshiba MFP.



Total Output Control

Choose the paper handling, image quality, color mode, and finishing options individually for each source document. e-BRIDGE Job Build compiles each source document into a single print job, allowing you to produce multiple, collated sets.



e-BRIDGE Job Build is ideal for:

- > Education — Combine all of the documents required for an assignment into a single print job and print as many collated sets as you need.
- > Government — Group documents, publications, lists, instruction sheets and forms together to quickly print all needed documents for a specific task. Switch paper sources on-the-fly to easily print color-coded multipart forms.
- > Church/Faith — Merge newsletters, bulletins, forms, or publications together and distribute them as pre-collated sets.
- > Associations & Organizations — Batch print notices, meeting minutes, membership lists, etc. for distribution among chapters.
- > Finance — Easily organize volume printing for departmental distribution switch between full color and economical black & white within the same print job.
- > Corporate — Create, merge, or group documents for presentations, employees, and departments.

Requirements

- > Utilizes the e-BRIDGE Postscript (PS3) print driver
- > Supported by the following Toshiba e-STUDIO MFPs:

- | | | |
|------------------------------|--------------------------------|-----------------------------------|
| e-STUDIO™165/205 | e-STUDIO™3511c/4511c | e-STUDIO™520/600/720/850 |
| e-STUDIO™167/207/237 | e-STUDIO™281c/351c/451c | e-STUDIO™520T/600T/720T |
| e-STUDIO™200L/230/280 | e-STUDIO™350/450 | e-STUDIO™2500c/3500c/3510c |
| e-STUDIO™202L/232/282 | e-STUDIO™352/452 | |

System Requirements	
Display Resolution	1,024 x 768 dots or more
Display Color	High color (16 bit) or higher is recommended
CPU	Pentium 266 MHz minimum or faster recommended
Memory	128 megabytes (MB) of RAM or higher recommended
Operating System	Windows XP Professional with Service Pack 2 (32-bit)

Call your Authorized Toshiba Dealer today for more information on how e-BRIDGE Job Separator and other Toshiba Document Solutions can help your organization.

- Corporate Office:** 2 Musick, Irvine, CA 92618-1631
1-800-GO-TOSHIBA
- East Coast:** 959 Route 46 East, 5th Floor, Parsippany, NJ 07054
Tel: 973/316-2700 Fax: 973/263-2393
- Midwest:** 8770 W. Bryn Mawr Ave., Suite 700, Chicago, IL 60631
Tel: 773/380-6000 Fax: 773/380-8077
- South:** 4855 Peachtree Industrial Blvd., Suite 210, Norcross, GA 30092-3024
Tel: 770/209-8540 Fax: 770/209-8556
- West Coast:** 142 Technology, Suite 150, Irvine, CA 92618
Tel: 949/462-6262 Fax: 949/462-2700

Web Site: www.copiers.toshiba.com

Check with your Toshiba Dealer for latest product compatibility.

† Requires GA-1190 attachment option

Distribute



Effective Documents, Properly Distributed for Less Cost

Our Solutions enable you to distribute documents more efficiently and with less expense by addressing how you create and output your documents, and present them in their final form.

When coupled with Toshiba e-STUDIO devices, Toshiba's software provides the following benefits:

- > Increased speed and impact of business communications
- > Customized and controlled print job processing
- > Improved workflow and maximized print throughput
- > Flexibility of document management and output
- > The ability to design, create, and deliver electronic documents, forms, and reports
- > Enabled printing and finishing features on Toshiba e-STUDIO devices

Designs and specifications subject to change without notice. For best results and reliable performance, always use supplies manufactured or designated by Toshiba. Not all options and features may be available at the time of product launch. Companies and products may have registered trademarks and hereby acknowledged.

© 2007 Toshiba America Business Solutions, Inc. Electronic Imaging Division
Description: e-BRIDGE Job Build Spec Sheet
Inv. Code D500107

TOSHIBA
Leading Innovation >>>